

**THE FACE OF A PHARAOH FOUND ON A STONE
ON MARS IN NASA MARS ROVER SPIRIT IMAGE**

Question asked of MARS: I am intrigued by your discovery of a “gremlin” so close to NASA’s *Spirit* and the prospect that it might be an inter-dimensional being of some kind. Tell me, have you found anything *inanimate* this close to the *Spirit*? It would seem that such a find would be less subject to the vagaries of interpretation.



Andrew D. Basiago, president, Mars Anomaly Research Society (MARS): Yes! Recently, we found the face of an Egyptian pharaoh on a rock photographed right next to the *Spirit* on Day 2004 of its mission to Mars (*below*). The rock was jutting out as *Spirit* moved past it, making the rock look like it was hovering above the ground. In my paper *The Discovery of Life on Mars* (2008), I show how such intaglios carved into native stone are quite ubiquitous on Mars.

The Face of a Pharaoh found on a Stone

The face is located in the upper corner of the rock, which, in light of the potential it holds to decipher Mars’ connection to Ancient Egypt, I have dubbed the Rosetta Stone of Mars (*below*).



The Rosetta Stone of Mars

A close-up reveals that on the rock’s pyramidal upper edge is the face of an Egyptian pharaoh wearing the distinctive royal headdress that was conical in shape and banked on top (*below*). The pharaoh is standing in front of a “pyramid.”

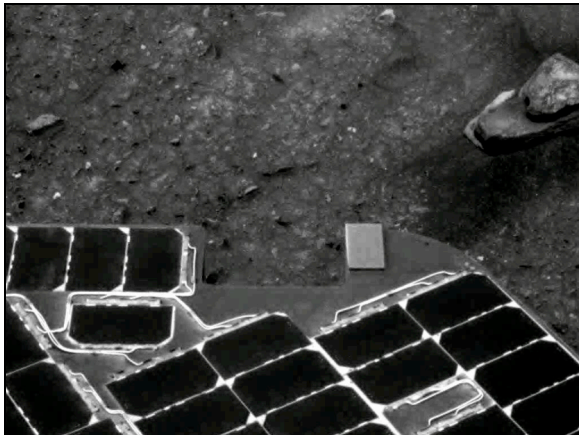
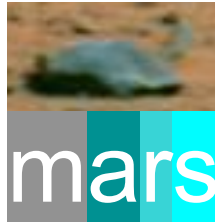


Image 2P304270980ESFB1E5P2857L2M1



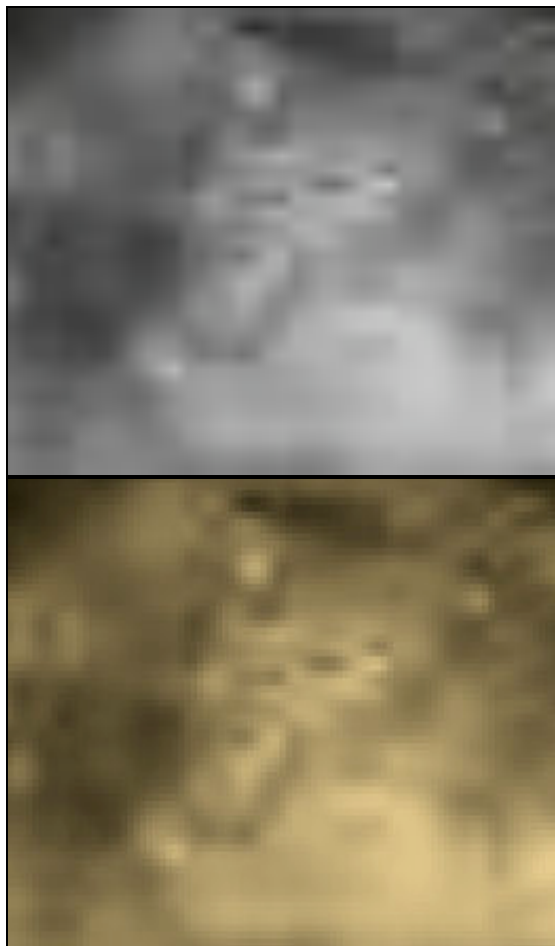
The Face of a Pharaoh



The Face of a Pharaoh, page 2

The Ancient Egypt-Ancient Mars Connection

This constitutes further evidence that Ancient Egypt and Ancient Mars were linked in an interplanetary confederation in the epoch before 9,500 BC, when debris elements from the *Vela* supernova explosion came into our solar system, destroying a planet, smashing Mars and ending the great maritime civilization on Earth that built the Great Pyramid and the Sphinx.



The face of an Egyptian pharaoh on Mars, seen in gray and color-enhanced in gold

So Egyptian a Martian

This is an image of an Egyptian monarch on Mars. The image of a man's head is adorned with a hat like we find atop Nefertiti on the iconic bust of her (*below*). The hat is adorned with a "cobra-ready-to-strike" symbolizing "Wadjet," the Protector of Egypt. The Ancient Egyptians either went to Mars, or came to Earth from Mars, and this intaglio is a vestige of their presence there.



Nefertiti-like pattern on Mars revealed by the late Mars pioneer Dr. Tom van Flandern (*left*). The iconic bust of Queen Nefertiti found by the German archaeologist Ludwig Borchardt at Amarna, Egypt in 1912 (*right*).

Acknowledgments

MARS wishes to thank the independent Mars anomaly researcher Ross Curley for contributing to the discovery of the face of a pharaoh on Mars and the production of this research paper. The photograph of the bust of Queen Nefertiti in the Altes Museum, Berlin, Germany was taken by Arkadiy Etumyan and is reprinted courtesy of the English Wikipedia at <http://en.wikipedia.org>.